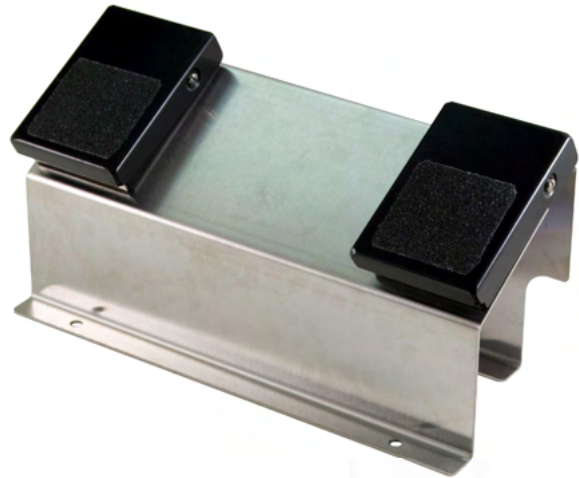


# IP-DBL

## Electronic Footswitches System, Low Power

The Electronic Footswitches IP-DBL Series has been designed to provide answers to specific needs from major bus manufacturers and operators.

This robust solution is to replace standard electromechanical switches used in city buses, featuring several benefits over existing original components.



### HIGHLIGHTS

- Design to **last the life of the vehicle**
- Easy to install and to use
- Resistant to water, snow, salt, soaps, oils, etc.
- Weather proof connector and cable

### OVERALL DIMENSIONS

*Excluding cable assembly:*  
Length 10.34" x Height 5.41" x Depth 4.03"

### MODELS & FEATURES

Part Number	IP-DBL-60MA-LSHS-H	IP-DBL-16S	IP-DBL-16L
Operating Voltage	12V & 24V	12V & 24V	12V & 24V
Load Voltage per Channel	12V & 24V	12V & 24V	12V & 24V
Load Current per Channel	60mA	15A	15A
Number of Channels	2	2	2
Standard Foot Rest Support	X	X	-
Low Foot Rest Support	-	-	X

X = Included, O = Optional, F = Factory selectable